

Create Your Life



**Smad**

SMAD ELECTRIC APPLIANCES CO.,LTD.  
NO.2 Heilongjiang South Road, Shibe District, Qingdao, China

Website : <https://www.smad.com.cn>

Email : [info@smad.com.cn](mailto:info@smad.com.cn)

Tel : +86532-86101152

Fax : +86532-86101153



**Smad**

**GLOBAL LEADING BRAND FOR  
HOME APPLIANCES**

2021 Built-in Products





# Contents

## Company Profile

## Products

|          |                 |       |
|----------|-----------------|-------|
| <b>1</b> | Refrigerator    | 1-2   |
| <b>2</b> | Freezer         | 3-4   |
| <b>3</b> | Microwave Oven  | 5-12  |
| <b>4</b> | Washing Machine | 13-17 |

## Company Profile

### Higher Quality Better Life

Qingdao Smad Electric Appliances Co., Ltd. (SMAD) was established in 1999. After many years of hard work, we have become a normalized and professional enterprise. Now SMAD has a staff of 600 persons and an annual output of 350 million Yuan. One sole proprietorship factory and two joint venture factories which are equipped with top-level production equipment and testing facilities can provide support for us.

### Company Culture

At SMAD we work as a close-knit family, not only within ourselves but also with our clients. We believe that unity and teamwork make the path for our success. Our mutual trust fosters a culture that embraces curiosity and challenges, which allows us to exceed our clients expectations and succeed in every way.

### Our Vision

To be the top manufacturer and exporter of electric home appliances, offering high quality products developed by creative thinking to ensure customers' total satisfaction.

### Social Responsibility

Smad is a great place to work. We care about our people and think about our employees as partners to cultivate the full potential of them and encourage them to pursue work-life balance.

We believe in the coexistence of humans and nature to reach the productive harmony, capable of fulfilling social and economic requirements for present and future generations.

### Our Mission

We are customer-centric and create a future growth market. We encourage and demand in-depth development and responsible actions. We are always one step ahead of the competition.

# Refrigerator

CREATE YOUR LIFE

Global Leading Brand For High-end  
Kitchen Appliances

1



## Refrigerator



| Model                  | DSF-133DH                  | DSL-179DH                  | DSD-126DH                  |
|------------------------|----------------------------|----------------------------|----------------------------|
| Total Capacity(L)      | 120                        | 137                        | 95                         |
| Fridge Compartment(L)  | 103                        | 137                        | /                          |
| Freezer Compartment(L) | 17                         | /                          | 95                         |
| Defrosting             | Manual                     | Manual                     | Manual                     |
| Certification          | CE/CB/GS                   | CE/CB/GS                   | CE/CB/GS                   |
| Energy Efficiency      | European Class E/F(A+/A++) | European Class E/F(A+/A++) | European Class E/F(A+/A++) |
| Refrigerant            | R600a                      | R600a                      | R600a                      |
| Product(W*D*H)(mm)     | 595*545*818                | 595*545*818                | 595*545*818                |
| Packaging(W*D*H)(mm)   | 628*570*888                | 628*570*888                | 628*570*888                |
| Weight(Net/Gross)(kg)  | 30/33                      | 28/31                      | 32/35                      |
| Loading (40HQ)         | 230                        | 230                        | 230                        |



| Model                  | DDB-294WHE        | DDB-312WHE             |
|------------------------|-------------------|------------------------|
| Total Capacity(L)      | 226               | 240                    |
| Fridge Compartment(L)  | 148               | 183                    |
| Freezer Compartment(L) | 78                | 57                     |
| Defrosting             | Automatic         | Automatic              |
| Certification          | CE/GS/CB          | CE/GS/CB               |
| Energy Efficiency      | European Class A+ | European Class A+ /A++ |
| Refrigerant            | R600a             | R600a                  |
| Product(W*D*H)(mm)     | 540*540*1772      | 540*540*1772           |
| Packaging(W*D*H)(mm)   | 585*564*1875      | 585*564*1875           |
| Weight(Net/Gross)(kg)  | 54/59             | 53/58                  |
| Loading (40HQ)         | 109               | 109                    |

# Washing Machine

CREATE YOUR LIFE

Global Leading Brand For High-end Kitchen Appliances

2



## Washing Machine



| Model                   | DWF-80A14LBM(G06)    | DWF-80B14LBM(D60G06)   |
|-------------------------|----------------------|------------------------|
| Washing Capacity(kg)    | 8                    | 8                      |
| Voltage(V)              | 220-240 V            | 220-240 V              |
| Spin Speed(rpm)         | 1400                 | 1400                   |
| Type                    | Front Loading Washer | Washer and Dryer Combo |
| Number of Program       | 16                   | 16                     |
| Energy Efficiency Class | A+++                 | A                      |
| Product(W*D*H)(mm)      | 595*540*825          | 595*540*825            |
| Packaging(W*D*H)(mm)    | 680*605*875          | 680*605*875            |
| Weight (kg)             | 63                   | 68                     |
| Loading (40HQ)          | 171                  | 171                    |



# Microwave Oven

CREATE YOUR LIFE

Global Leading Brand For High-end  
Kitchen Appliances

3



## Microwave Oven



| Model                   | DMB70-20LBMG(Y5-RR00) | DMB70-20LBMG(YY-RR02) |
|-------------------------|-----------------------|-----------------------|
| Capacity                | 20L                   | 20L                   |
| Power                   | 700W                  | 700W                  |
| Voltage/frequency       | 220-240V/50Hz         | 220-240V/50Hz         |
| Dimension (mm)          | 372*595*328           | 595*312*390           |
| Container Loading 40 HQ | 530 pcs               | 870 pcs               |



| Model                   | DMB90-23LBMG(LXG-RR04) | DMB90-23LBMG(LXGA-RR04) |
|-------------------------|------------------------|-------------------------|
| Capacity                | 23L                    | 23L                     |
| Power                   | 900W                   | 900W                    |
| Voltage/frequency       | 220-240V/50Hz          | 220-240V/50Hz           |
| Dimension (mm)          | 595*390*380            | 595*390*380             |
| Container Loading 40 HQ | 604 pcs                | 604 pcs                 |

## Microwave Oven



| Model                   | DMB90-23LBMG(XGA-RR04) | DMB90-23LBMG(XG-RR04) |
|-------------------------|------------------------|-----------------------|
| Capacity                | 23L                    | 23L                   |
| Power                   | 900W                   | 900W                  |
| Voltage/frequency       | 220-240V/50Hz          | 220-240V/50Hz         |
| Dimension (mm)          | 595*390*380            | 595*350*390           |
| Container Loading 40 HQ | 604 pcs                | 604 pcs               |



| Model                   | DMB90-25LBMG(LXGA-RR04) | DMB90-25LBMG(XG-RR04) |
|-------------------------|-------------------------|-----------------------|
| Capacity                | 25L                     | 25L                   |
| Power                   | 900W                    | 900W                  |
| Voltage/frequency       | 220-240V/50Hz           | 220-240V/50Hz         |
| Dimension (mm)          | 595*390*380             | 595*350*390           |
| Container Loading 40 HQ | 604 pcs                 | 604 pcs               |

## Microwave Oven



| Model                   | DMB90-25LBMG(YX-RR03) | DMB90-30LBMG(XK-RR01 ) |
|-------------------------|-----------------------|------------------------|
| Capacity                | 25L                   | 30L                    |
| Power                   | 900W                  | 900W                   |
| Voltage/frequency       | 220-240V/50Hz         | 220-240V/50Hz          |
| Dimension (mm)          | 595*390*380           | 539*390*354            |
| Container Loading 40 HQ | 645 pcs               | 475 pcs                |



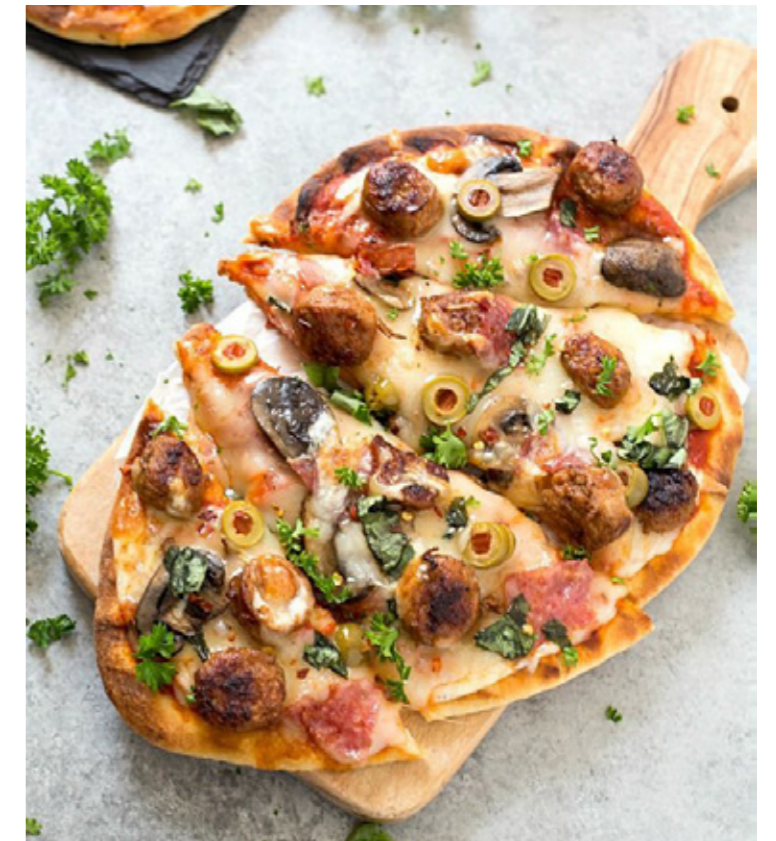
| Model                   | DMB90-30LBMG(H3-RR00) | DMB90-30LBMG(B5-RR00 ) |
|-------------------------|-----------------------|------------------------|
| Capacity                | 30L                   | 30L                    |
| Power                   | 900W                  | 900W                   |
| Voltage/frequency       | 220-240V/50Hz         | 220-240V/50Hz          |
| Dimension               | 11.8*21.3*16 inch     | 595*312*372mm          |
| Container Loading 40 HQ | 548 pcs               | 632 pcs                |

## Microwave Oven



| Model                   | DMB90-34LTMG(YB) | DMB90-34LKMG(YA) |
|-------------------------|------------------|------------------|
| Capacity                | 34L              | 34L              |
| Power                   | 700W             | 900W             |
| Voltage/frequency       | 220-240V/50Hz    | 220-240V/50Hz    |
| Dimension (mm)          | 592*543*386      | 592*540*386      |
| Container Loading 40 HQ | 342 pcs          | 342 pcs          |

## CREATE YOUR LIFE

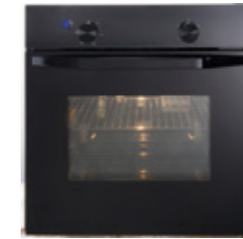


## Microwave Oven



| Model                        | DTB300-65EG(11A) | DTB300-65EG(12A) |
|------------------------------|------------------|------------------|
| Capacity(L)                  | 65L              | 65L              |
| Power                        | 3000W            | 3000W            |
| Voltage/frequency            | 220-240V/50-60HZ | 220-240V/50-60HZ |
| Dimension (mm)               | 595*570*595      | 595*570*595      |
| Container Loading 40 HQ(PCS) | 216              | 216              |

## Microwave Oven



| Model                        | DTB210-70MG(17A) | DTB175-36EM(TR9)            |
|------------------------------|------------------|-----------------------------|
| Capacity(L)                  | 70L              | 36L                         |
| Power                        | 2100W            | Microwave:1550W;Grill:1200W |
| Voltage/frequency            | 220-240V/50-60HZ | 220-240V/50-61HZ            |
| Dimension (mm)               | 595*570*595      | 454*595*525                 |
| Container Loading 40 HQ(PCS) | 216              | 204                         |



| Model                        | DTB285-70MG(13A) | DTB300-65MG(14A) |
|------------------------------|------------------|------------------|
| Capacity(L)                  | 68L              | 65L              |
| Power                        | 2850W            | 3000W            |
| Voltage/frequency            | 220-240V/50-60HZ | 220-240V/50-60HZ |
| Dimension (mm)               | 595*570*595      | 595*570*595      |
| Container Loading 40 HQ(PCS) | 216              | 216              |



| Model                        | DTB175-36EM(TQN) | DTB90-36EM(6HQ)             |
|------------------------------|------------------|-----------------------------|
| Capacity(L)                  | 36L              | 44L                         |
| Power                        | Grill:1200W      | Microwave:1650W;Grill:1750W |
| Voltage/frequency            | 220-240V/50-62HZ | 220-240V/50-63HZ            |
| Dimension (mm)               | 454*595*525      | 454*595*568                 |
| Container Loading 40 HQ(PCS) | 204              | 204                         |



# CREATE YOUR LIFE

Global Leading Brand For High-end Kitchen Appliances



# Dishwasher

CREATE YOUR LIFE

Global Leading Brand For High-end Kitchen Appliances

3



## Dishwasher



| Model                   | DDB9-45BG(B)  | DDB12-60BG(A) |
|-------------------------|---------------|---------------|
| Place sett.             | 9             | 12            |
| Energy class            | A+AA          | A++AA         |
| No of program           | 6             | 5             |
| Delay time              | 1-24 H        | 1-24 H        |
| Control                 | Button        | Button        |
| Color                   | White         | White         |
| Unit dimensions (W*D*H) | 448*558*815mm | 596*558*815mm |
| Loading Qty (40HQ)      | 252pcs        | 162pcs        |

## Dishwasher



| Model                   | DDB12-60BG ( B ) | DDS12-60BG(J) |
|-------------------------|------------------|---------------|
| Place sett.             | 12               | 12            |
| Energy class            | A++AA            | A++AA         |
| No of program           | 7                | 6             |
| Delay time              | 1-24 H           | 1-24 H        |
| Control                 | Button           | Button        |
| Color                   | White            | White         |
| Unit dimensions (W*D*H) | 596*558*815mm    | 596*578*815mm |
| Loading Qty (40HQ)      | 162pcs           | 162pcs        |



| Model                   | DDB12-60BG(401B) | DDB12-60BG(411B) |
|-------------------------|------------------|------------------|
| Place sett.             | 12               | 12               |
| Energy class            | A++AA            | A++AA            |
| No of program           | 6                | 7                |
| Delay time              | \                | 1-24 H           |
| Control                 | Button           | Button           |
| Color                   | White            | White            |
| Unit dimensions (W*D*H) | 596*558*815mm    | 596*558*815mm    |
| Loading Qty (40HQ)      | 162pcs           | 162pcs           |



| Model                   | DDS12-60TG(K) | DDS14-60TG(K) |
|-------------------------|---------------|---------------|
| Place sett.             | 12            | 12            |
| Energy class            | A++AA         | A++AA         |
| No of program           | 6             | 6             |
| Delay time              | 1-24 H        | 1-24 H        |
| Control                 | Touch         | Touch         |
| Color                   | White         | White         |
| Unit dimensions (W*D*H) | 596*578*815mm | 596*578*815mm |
| Loading Qty (40HQ)      | 162pcs        | 162pcs        |

## Dishwasher



| Model                   | DDS14-60TG(M) | DDS14-60BG(S) |
|-------------------------|---------------|---------------|
| Place sett.             | 14            | 14            |
| Energy class            | A++A          | A++A          |
| No of program           | 6             | 6             |
| Delay time              | 1-24 H        | 1-24 H        |
| Control                 | Touch         | Button        |
| Color                   | White         | White         |
| Unit dimensions (W*D*H) | 596*578*815mm | 596*578*815mm |
| Loading Qty (40HQ)      | 162pcs        | 162pcs        |

